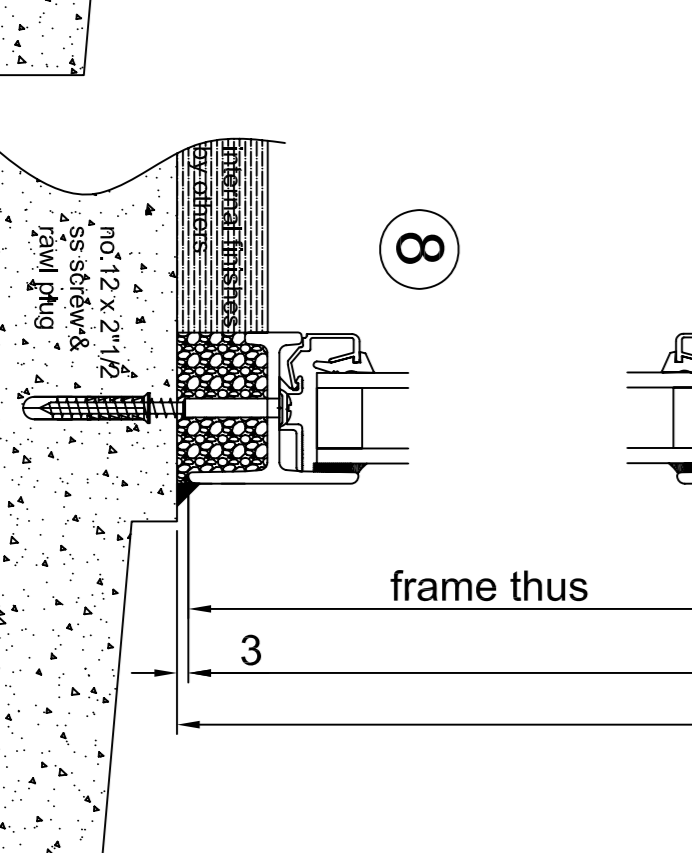
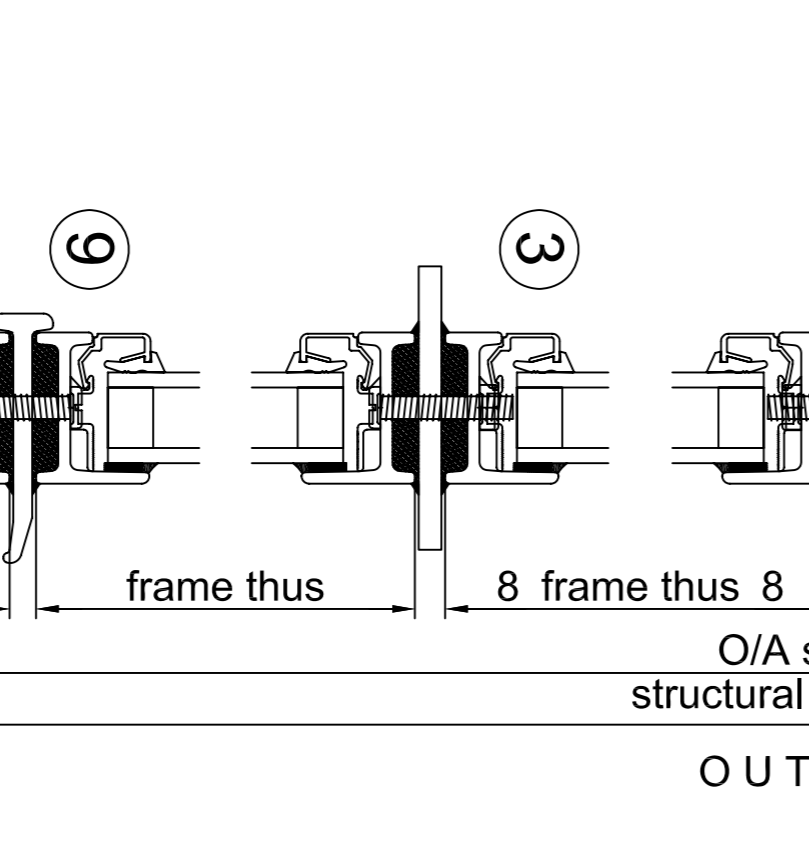
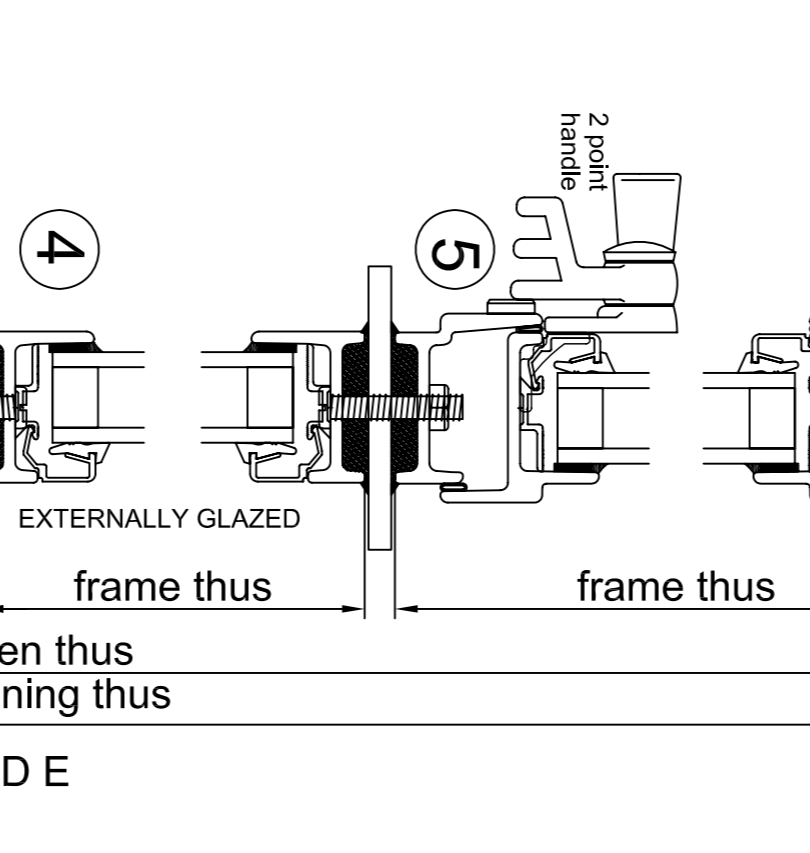
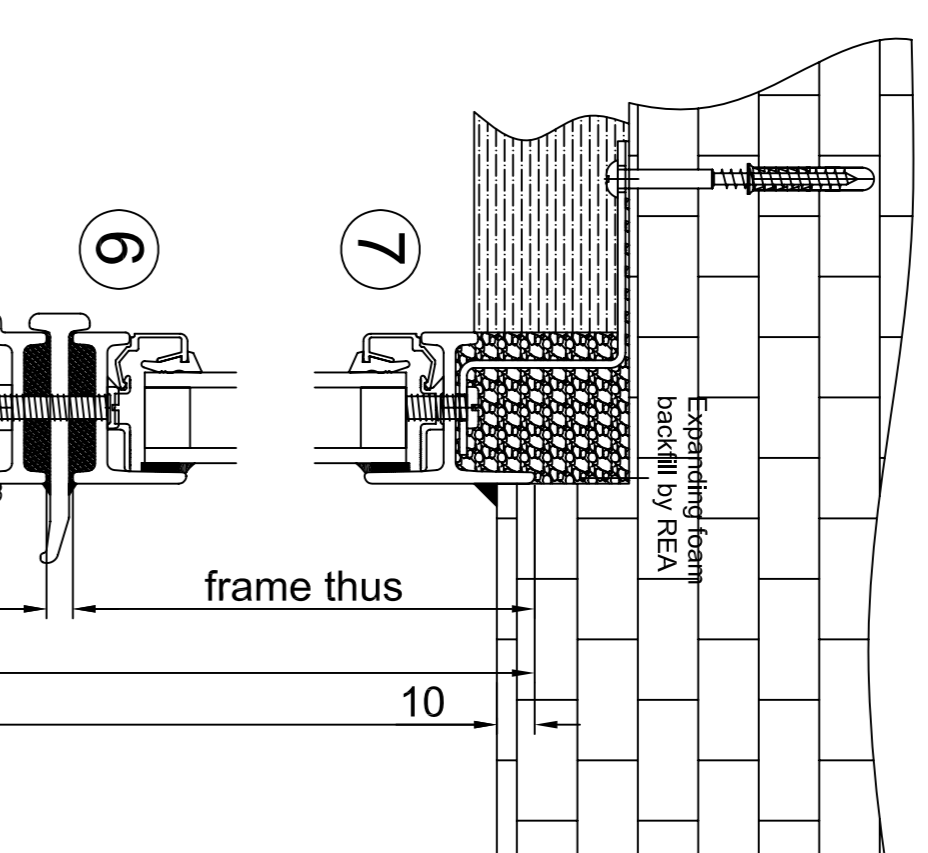
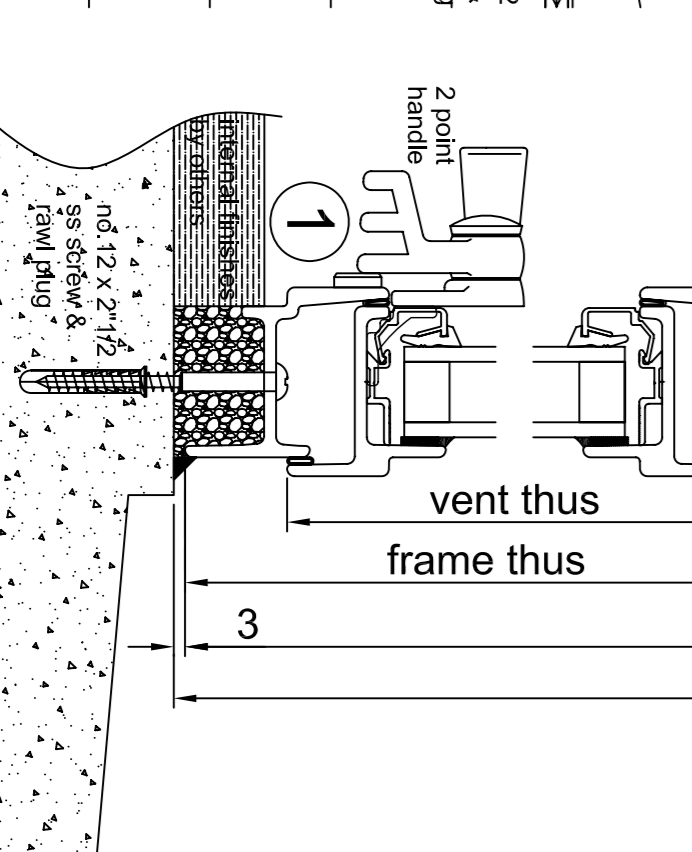
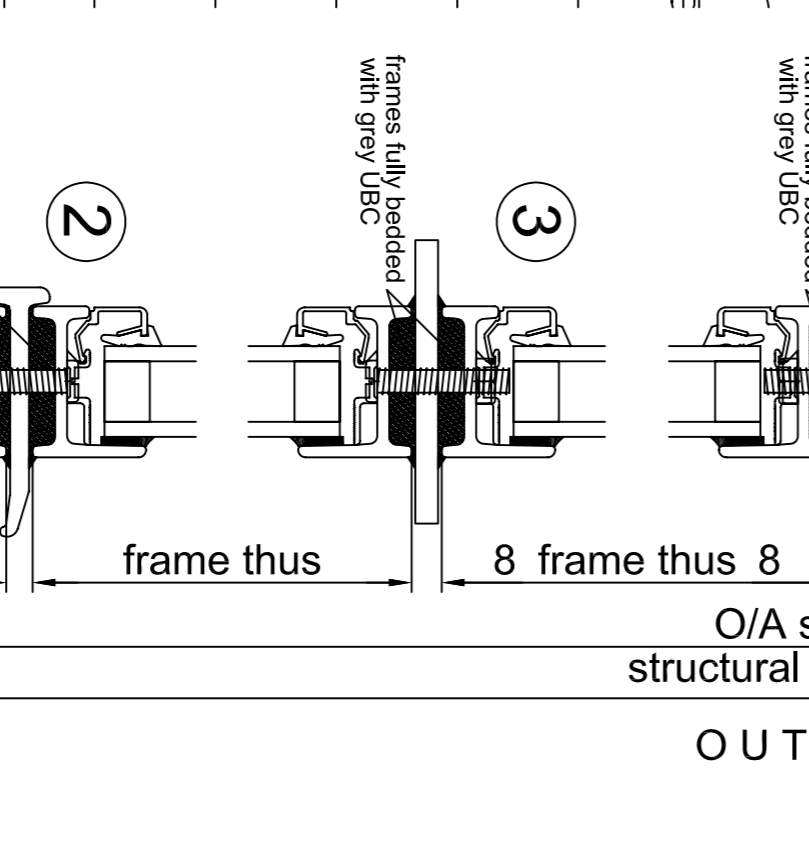
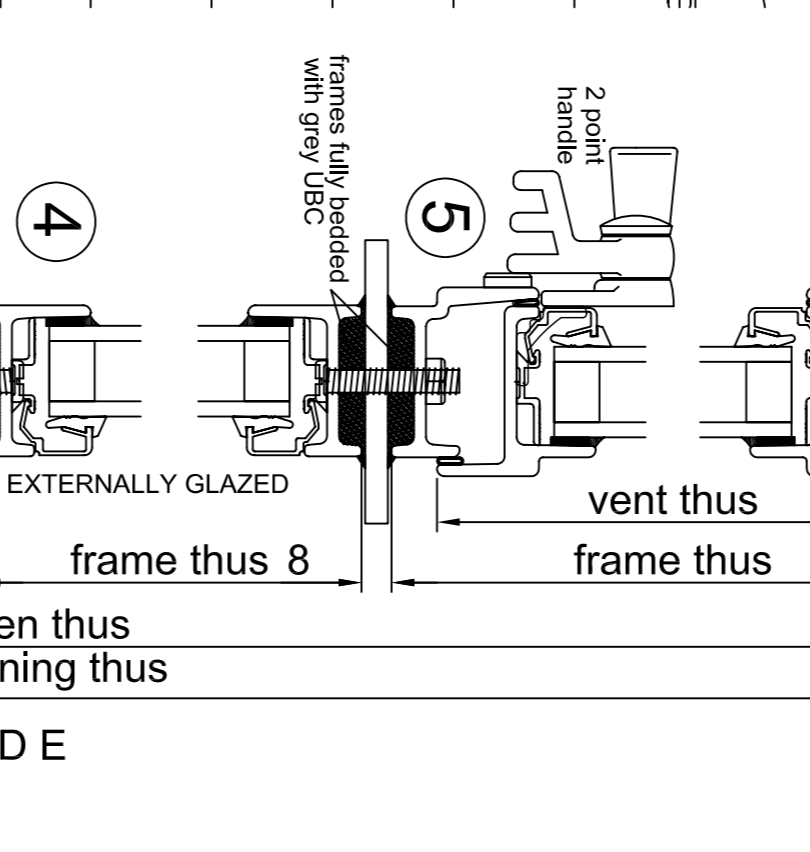
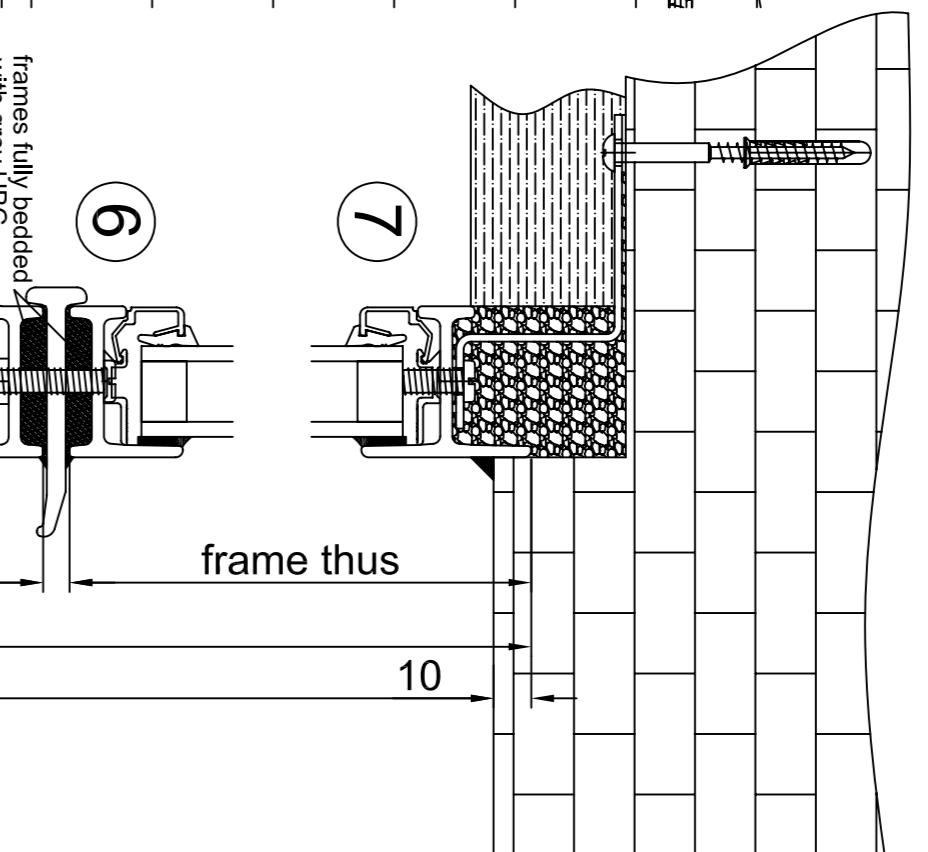
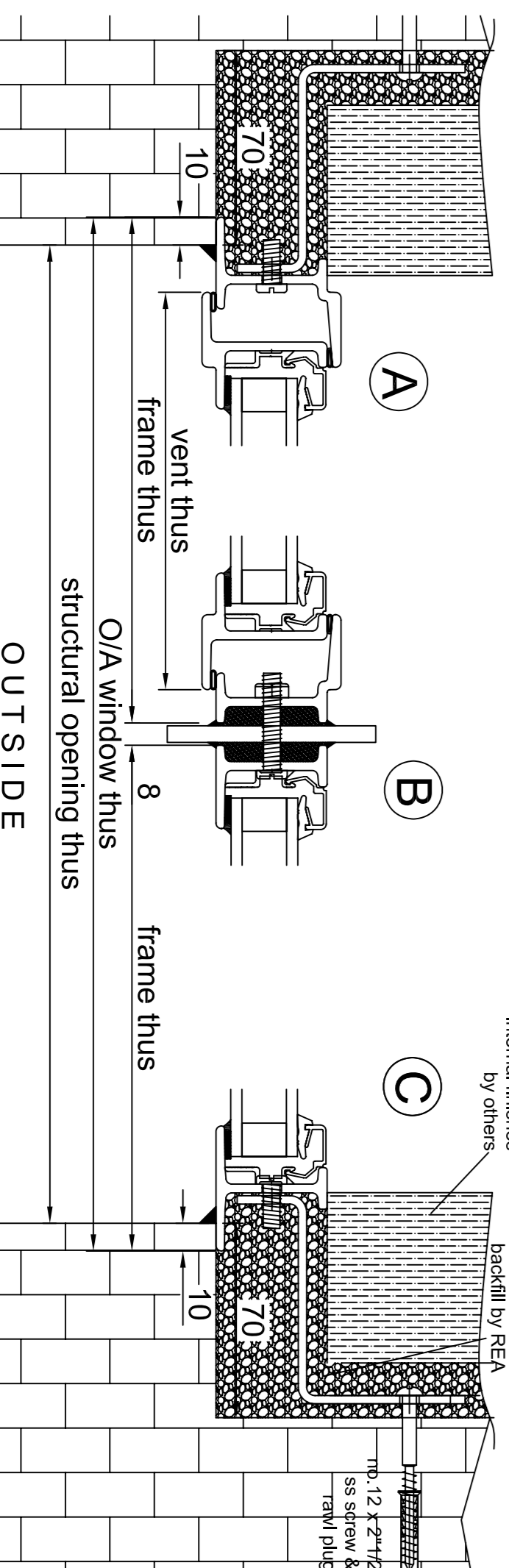
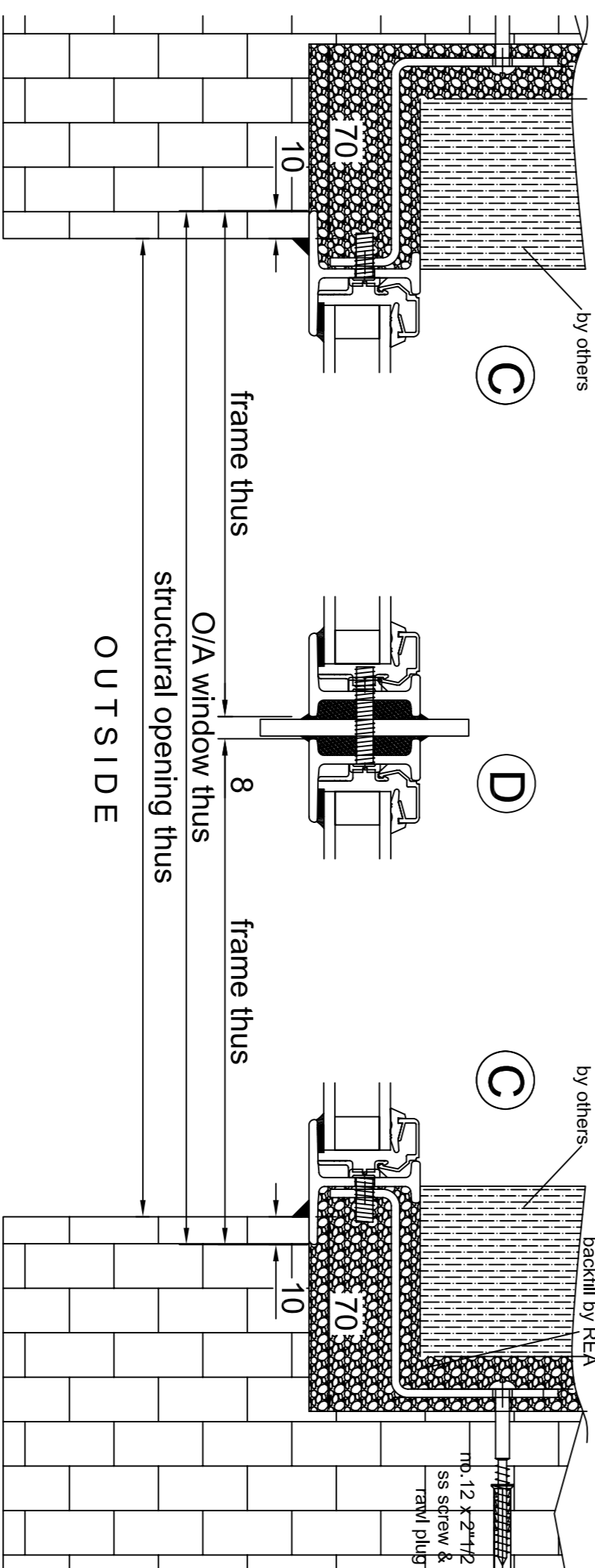
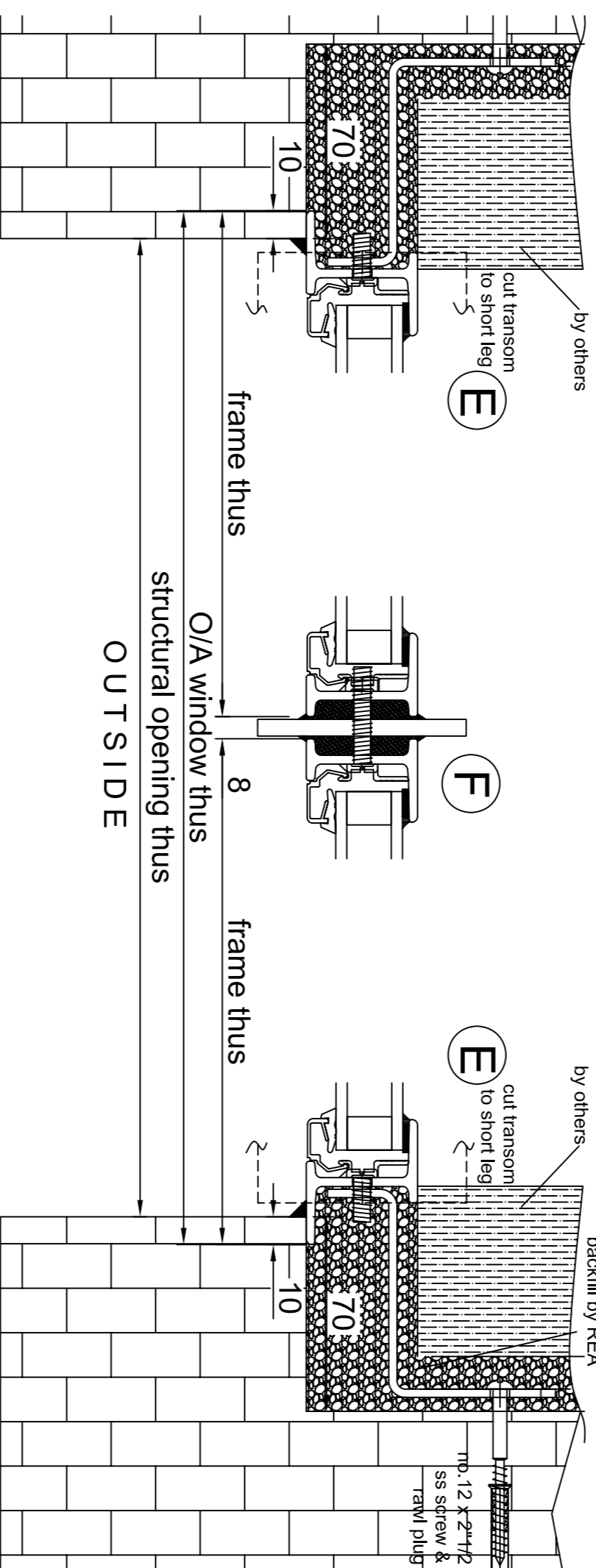
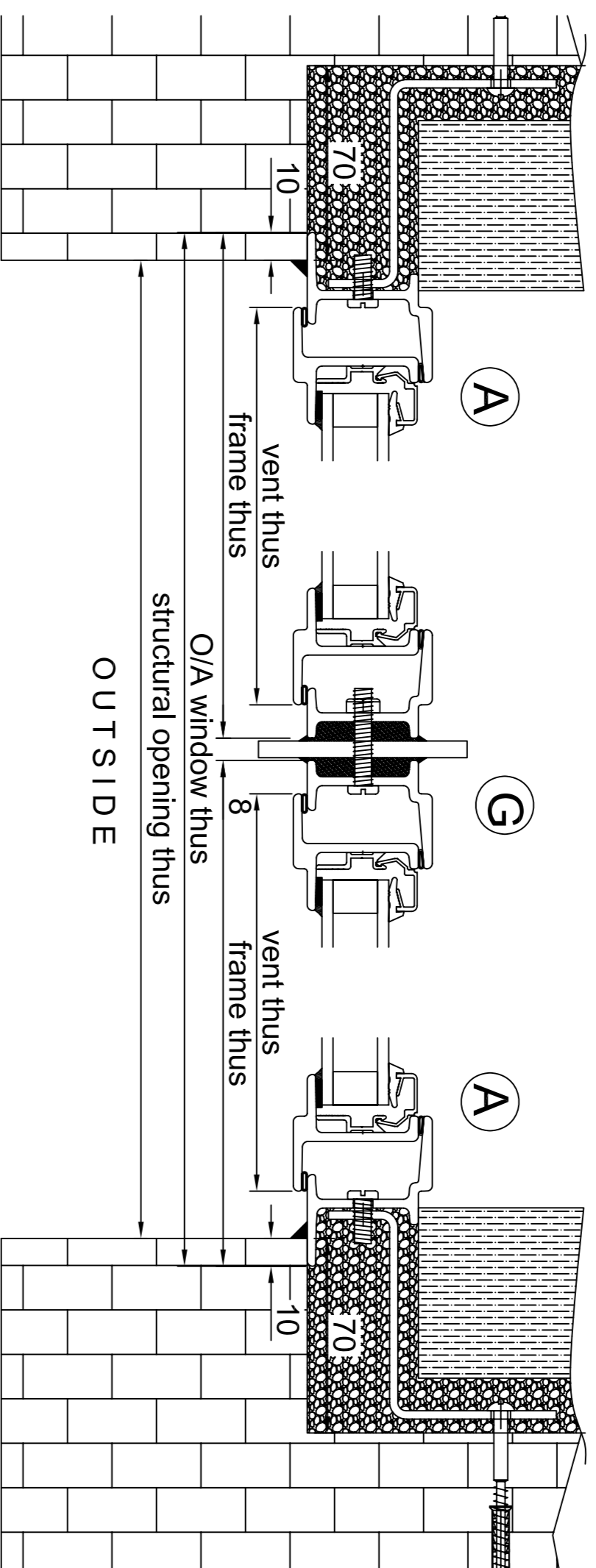
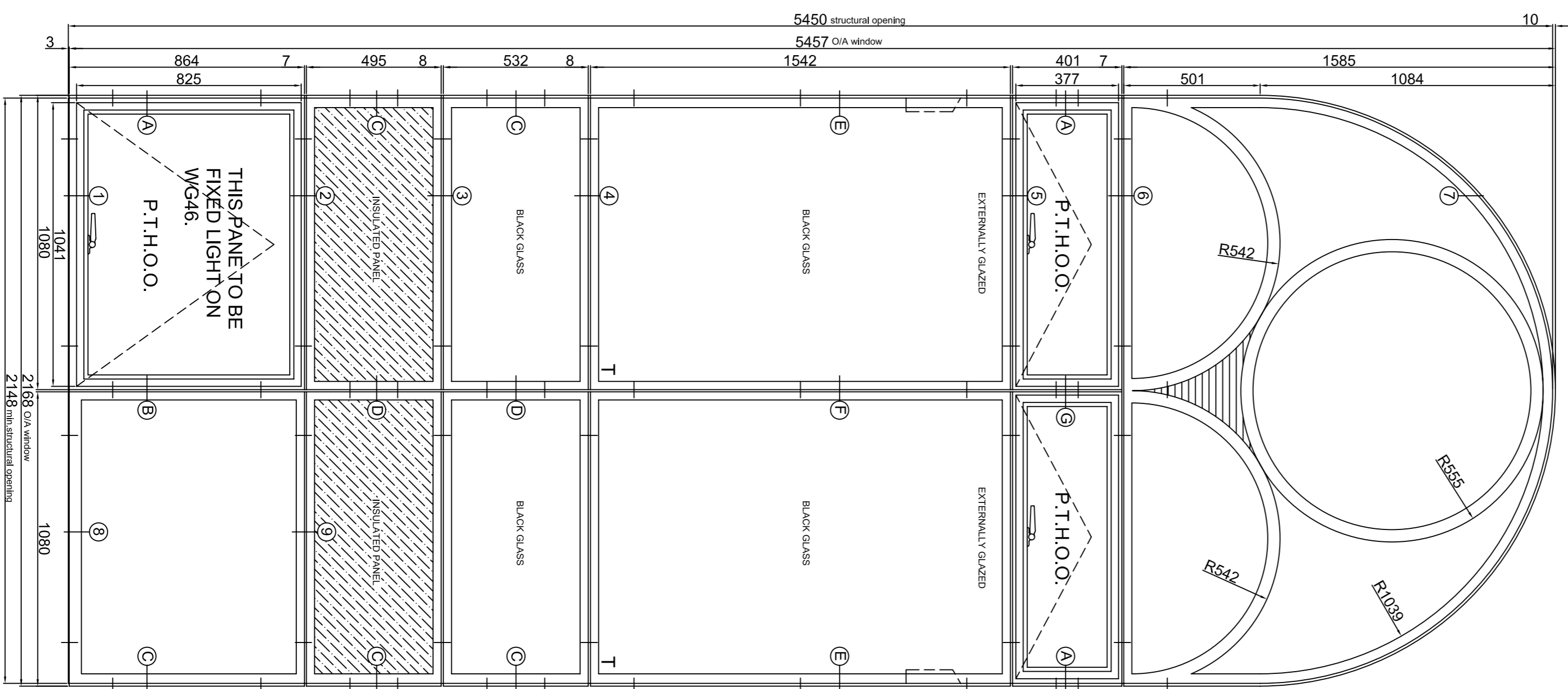


WINDOW WG46 TO HAVE 2 IDENTICAL FIXED LIGHTS AT BOTTOM OF WINDOW

WG/46.47 - 2 no.



24mm Double glazed unit
4mm Clear float outer pane
16mm Argon filled cavity
4mm Clear float soft coat low 'e' inner
'T' denotes inner pane toughened

All installation teams are to ensure that the holes in the corner of the outer frame of all opening vents are sealed during site assembly operations

SPECIAL NOTE TO BUILDER

CLEANING is part of our fixing and glazing practice but will be limited to the removal of surplus mastic or putty and rubbing over all significant surfaces with a dry cloth as work proceeds. We cannot accept responsibility for dirt holes pierced for manufacture are not all intended to receive fixing screws but will be sealed with mastic during installation.
FIXING SCREWS and nuts are all stainless steel. We DO NOT point them. STOVE POLYESTER FACTORY FINISHES are tough but can be damaged by sharp edges and set-backs from other building components. TAKE CARE when small areas of damage can be made good with air drying touch up paint to give a close (but not exact) match.
Galvanised coatings on rolled steel are not smooth. Allow for unevenness of To maintain the finish, wash at three to six monthly intervals with water, mild detergent, and soft cloth or sponge. Rinse on completion.
SITE PAINTING of galvanised steel needs calcium phosphate or depressing, etching primer and zinc phosphide. Do not paint fittings or weatherseals.

FINISH
HOT DIP GALVANISED & STOVE POLY 7043 S.G.

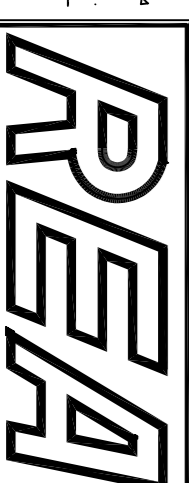
FIXING
BY REA METAL WINDOWS
GLAZING
BY REA METAL WINDOWS

During build if supplied must be held against the glass and mastic in accordance with BS 6282
REV/ DATE AMENDMENT

PROJECT

CAVENDISH MILL

Copyright © The content of this drawing should not be reproduced in whole or part without prior consent in writing from this company.
REA METAL WINDOWS LTD.
128/130 GREEN LANE
LIVERPOOL, L15 7ED
TEL: 0151 228 6373
FAX: 0151 254 1828
SCALE 1:15 elev.
DRAWN BY M.WILLIAMS
DATE 22.10.09
APPRO FOR MANUF R
ESTIMATE REF 2008/367 rev.1
ESTIMATE DATE 08/06/2009



DRAWING No.
2573-39